

# Angular Contact Ball Bearings

Bearing No. : **NACHI 7216B**

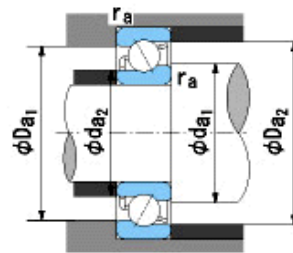
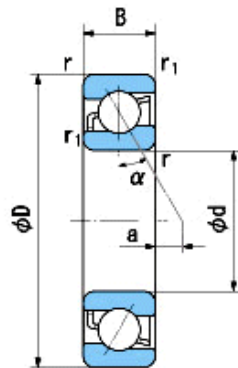
■ Bearing Type

■ Clearance

■ Tolerance Class

Dimensions

d = 80 0  
-0.015  
D = 140 0  
-0.018  
B = 26 0  
-0.150  
r = 2~3  
(Radial Direction)  
r = 2~4.5  
(Axial Direction)  
r1 = 1~1.9  
(Radial Direction)  
r1 = 1~3  
(Axial Direction)  
a = 33.2



Dimensions

da1(min) = 90  
da2(min) = 86  
Da1(max) = 130  
Da2(max) = 134  
ra(max) = 2  
ra1(max) = 1  
Mass = 1.50 kg

Basic Dynamic Load Rating Cr : **83,500** N  
Basic Static Load Rating Cor : **71,500** N  
Limiting Speed ;  
Grease Lubrication : **3,600** min<sup>-1</sup>  
Oil Lubrication : **5,000** min<sup>-1</sup>

	INNER RING	OUTER RING
O.D.Surface Runout with Side :		-
Axial Runout with Bore :	-	
Axial Runout with Raceway :	-	
Width Variation :	<b>0.025</b>	<b>0.025</b>
Radial Runout :	<b>0.020</b>	<b>0.040</b>